



Changzhou Dege Decorative Material Co., Ltd.  
 Building B, No. 388 Heping Road,  
 Tianning District, Changzhou, Jiangsu, China  
 Tel: +86-519-83828201  
 Web: www.degefloors.com  
 Email: info@dgfloors.cn



## OUTDOOR WPC TIMBER TUBE

## What is WPC ?

WPC (Wood Plastic Composite) is extruded thermoplastic composite made of polyethylene and natural wood fiber. Wood plastic composite is more environmentally friendly and requires less maintenance than the alternatives of solid wood. WPC is resistant to cracking and splitting, it is a material that can be molded with or without simulated wood grain details.



### Strength and Durability

Unlike timber, our boards retain their strength and durability throughout their life.



### No Rotting or Warping

A unique material composition resistant to the damaging effects of moisture build-up.



### Eco-Friendly

A long-lasting material composed of a blend of recycled plastic and wood fibres.



### No Splintering

The material composition ensures long-term safety and assurance.



### 25 Year Residential Warranty

High-quality, long-lasting products with a 25-year warranty.



### Very Low Maintenance

All our boards are hard-wearing and easy to maintain.

## OUTDOOR WPC DIY DECKING



DE-K150-150A



DE-K90-90A



DE-K120-120A



DE-K120-120A



DE-K25-25A



DE-K50-30B



DE-K50-50A



DE-K60-40A



DE-K200-200A



DE-K80-80A



DE-K83-32A



DE-K60-40B



DE-K91-46A



DE-K80-50A



DE-K100-30A



DE-K100-50A



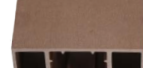
DE-K150-60A



DE-K150-60B



DE-K160-60A



DE-K160-80A



DE-K200-80A



DE-K200-100A

## WPC Timber Material



Composite



Plastic



Wood Powder



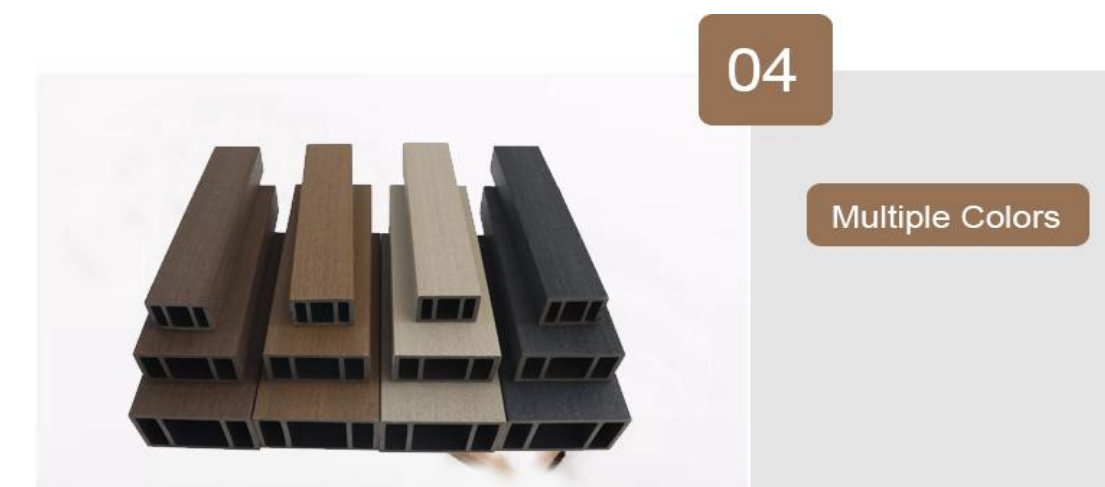
02

100% Waterproof



03

Thickened Design



04

Multiple Colors

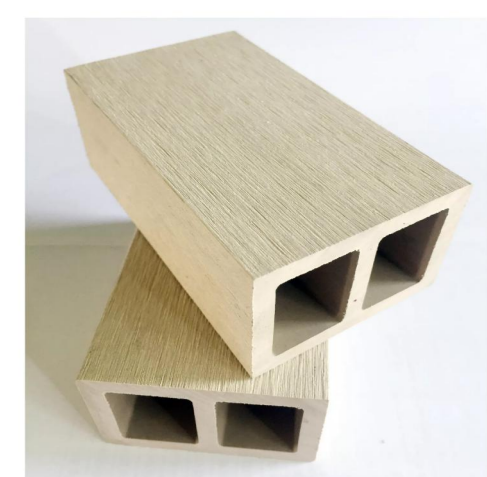
## WPC Timber Tube Details

01

Fire Resistant



## Different Surface Treatment

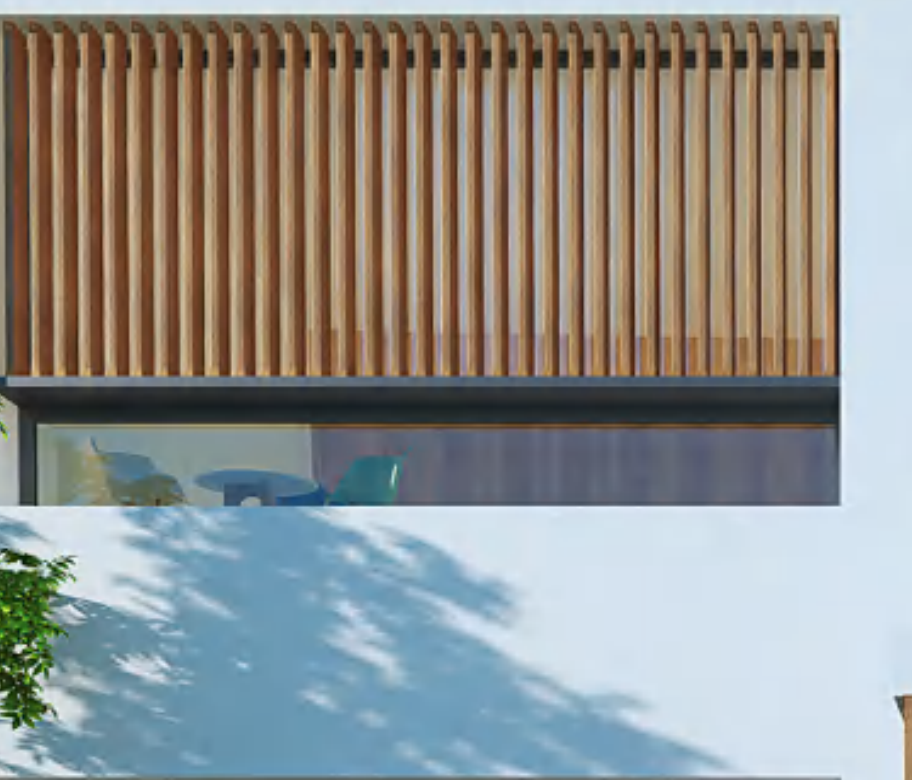
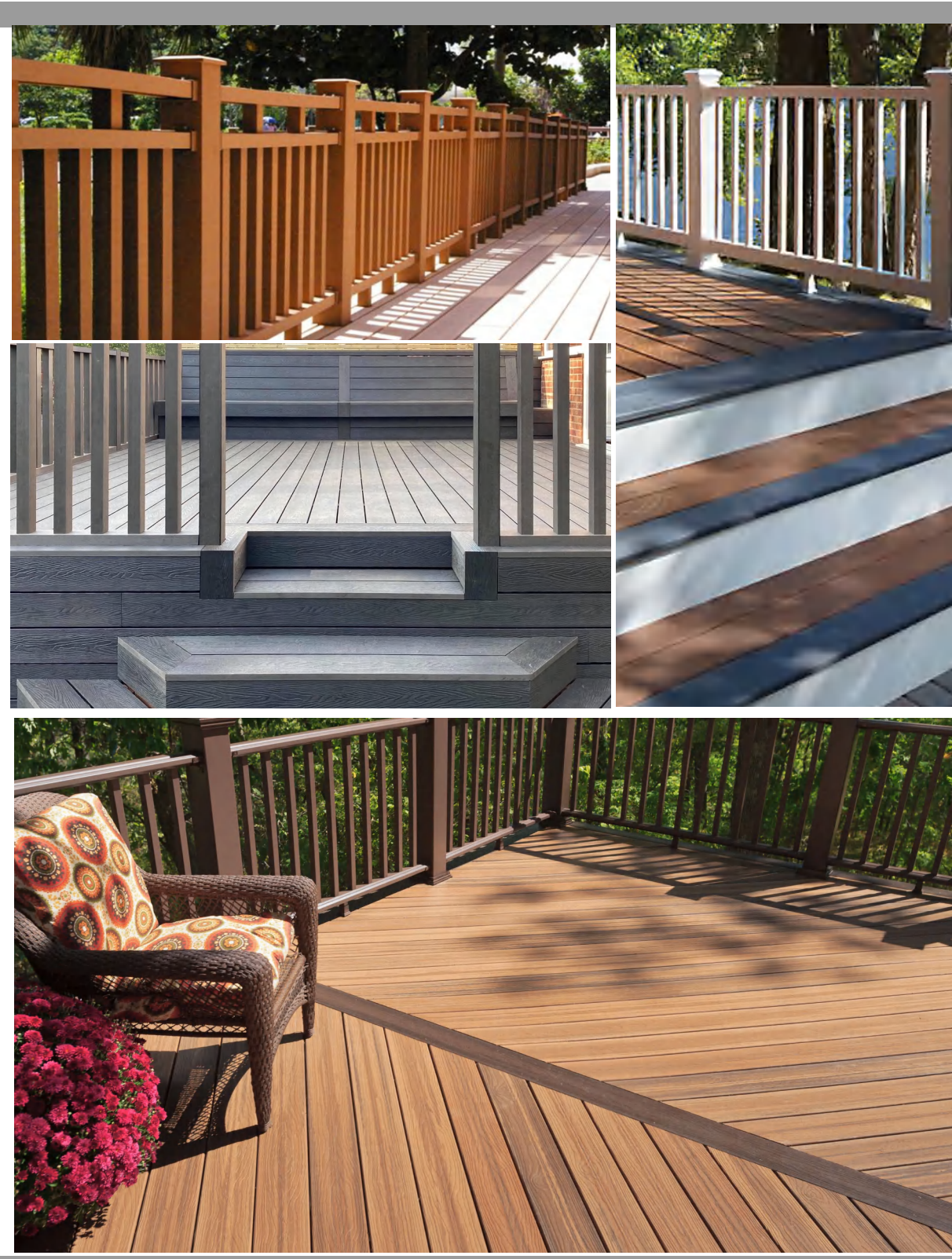


Sanded



Wood Grain

## Other Applications



## OUTDOOR WPC TIMBER TUBE

Product Name	Outdoor WPC Timber Tube
Raw Material	32% HDPE, 58% Wood Fiber, 10% Chemical Additives
Size	50*50mm, 60*40mm, 80*50mm, 100*30mm, 100*50mm, etc.
Surface Treatment	Sanded, Wood Grain
Color	Black, Red Wood, Walnut, Light Grey, Teak, Coffee
Recycling	100% recyclable
Applications	Wall Cladding, Pergolas, Railing, Etc.

## Finished Tube Colors



## Installation Tools & Accessories



U-shape bracket



Set Screws



Expansion Screws



Cutter



Pencil



Tap measure

## Installation Process



1. Install the U-shape bracket on the ground by using expansion screw.



2. Install the timber tube on the U-shape bracket.



3. Fix U-shape bracket and timber tube by using set screw.



4. Finish timber installation.